



UNiiQA+

Line scan simplicity from e2v

CIVIL AEROSPACE

DEFENCE

SPACE

INDUSTRIAL

MEDICAL & SCIENCE

SECURITY & RESCUE



UNiiQA+ bringing your sorting equipment to the next level

KEY BENEFITS

- Features an exclusive state-of-the-art e2v CMOS image sensor which provides high sensitivity, high dynamic range and delivers:
 - Increased sorting yield and waste reduction with improved image segmentation
 - Maximised sorting machine throughput
 - Increased sorting quality with single shot colour acquisition
 - Robust to acceleration/deceleration artefacts
 - Robust to non-axial food movement
 - Easy calibration and alignment: no filter or multi-light timing calibration
 - Highly efficient in the removal of unwanted colours, and foreign material (FM)
 - Reduces sorter power consumption
 - Low camera power consumption <4W
 - Decreases the lighting power required due to the high sensitivity e2v sensor
 - Reduces compressed air consumption by accurately targeting and removing defects with the high resolution colour UNiiQA+ camera
- Flexible optics choices and costs: C-mount, F-mount, M42 mount compatible
- The smallest form factor (60mm x 60mm x 28mm) allows the UNiiQA+ to be fitted to any mechanical set-up
- Modularity: the versatile multi-resolution option makes the UNiiQA+ adaptable to multiple sorting widths
- Increases your yield and sorting quality with a real-time and reliable camera link interface
- Reduces the complexity and cost of your system by removing the need for an external power generator

TYPICAL APPLICATIONS

- Belt sorting of
 - Minerals
 - Potatoes and other vegetables
 - Meat
 - Seafood
 - Fresh fruits
- Free fall food sorting of
 - Recyclable materials and virgin plastics
 - Nuts
 - Rice
 - Seeds
 - Grain
 - Coffee
 - Dehydrated foods
 - Mining
- Tobacco

UNiiQA+ family

Line scan simplicity from e2v

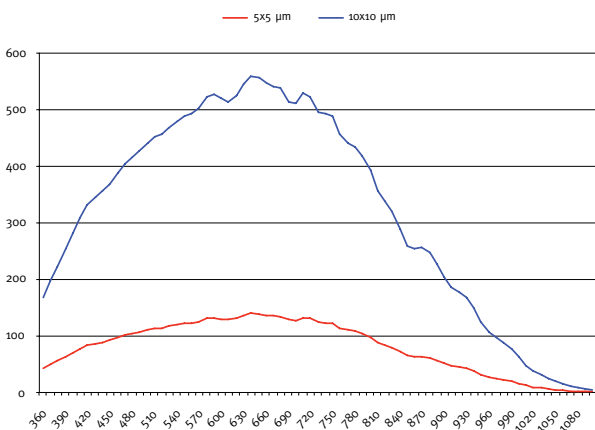
e2v's UNiiQA+ family of line scan cameras has been specifically designed to bring affordable, flexible and simple high speed solutions to your current optical sorting equipment. The UNiiQA+ combines a dynamic range colour image sensor with high sensitivity and real-time imaging. It helps you to effectively identify defects and blemishes and reduces waste whilst still meeting regulatory safety standards. The UNiiQA+ also keeps your bill of materials under control with industry-leading affordability.

The UNiiQA+ family is characterised by its simplicity:

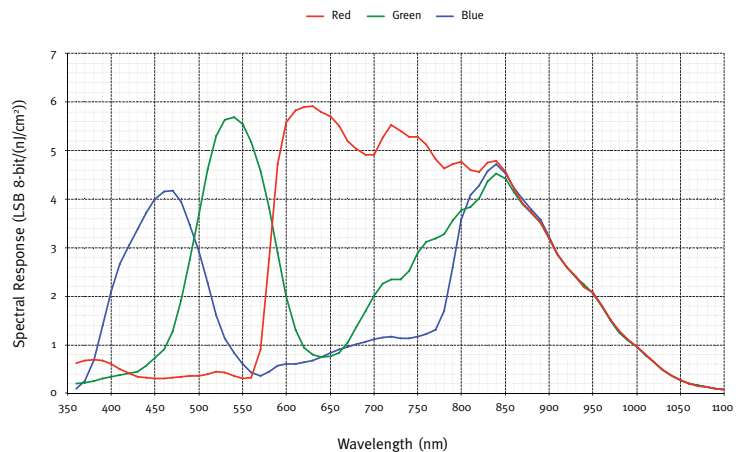
- Any resolution from 0.5k to 4K pixels to match your belt width or your targeted accuracy
- Available in colour and monochrome versions in order to be adapted to multiple food types and varieties

UNIIQA+ ESSENTIAL MODELS		
Colour	Monochrome	Colour
Speed	20KHz in 4K 40KHz in 2K / 1K / 0.5K	
Resolution	Single resolution models: 4K or 2K or 1K or 0.5K pixels Versatile resolution model: 4K / 2K / 1K / 0.5K pixels	
Pixels size	5µm x 5µm in 4K resolution 10µm x 10µm in 2K / 1K / 0.5K resolution	
Sensor timing	Single shot acquisition at all resolutions	Single shot bayer acquisition in 2K / 1K / 0.5K - time delayed integration in 4K
Dynamic range	70dB in 4K 73dB in 2K / 1K / 0.5K	
Dimensions	60mm x 60mm x 28mm	
Interface	Camera Link Base (frame grabber less interface upcoming)	
Optical mount	M42-mount native Compatible with C-mount and F-mount optics	

RESPONSE (LSB₁₂ BITS/(NJ)/CM²)



SPECTRAL RESPONSE



Contact us online at:
e2v.com/contact-us

